



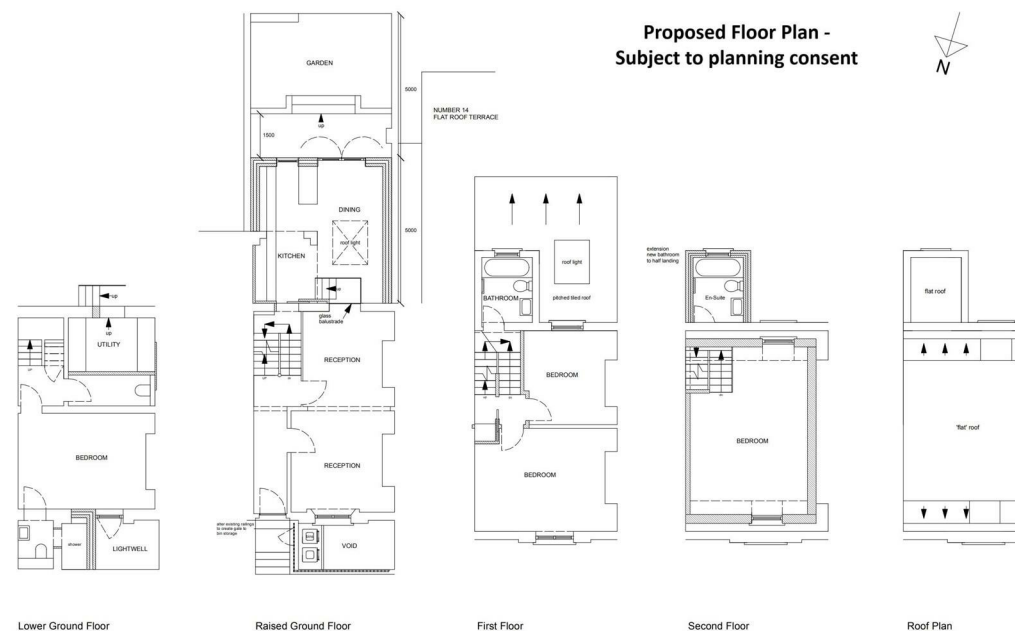
Islington Park Street, London, N1 1PU
£1,275,000 Freehold





3 x  1 x  2 x 

A rare opportunity to buy a freehold period un-modernised three bedroom family house located in desirable Barnsbury. Comprising a basement and a further two storeys with a south facing garden, the current 1173 sq ft property retains a few original features, and has a huge amount of potential to extend and develop into a lovely family home set within a lovely Georgian terrace on Islington Park Street. Planning to extend into the garden, and into the roof space to increase the general square footage, in order to create a 4 bed, 3 bathroom home, has been submitted only. The house is advertised with pictures and floor plans of the current house, as well as a proposed floorplan and some CGI generated pictures. Located 7 minutes walk from Highbury and Islington station, and only a few minutes walk from the pubs and restaurants around picturesque Barnsbury square. Freehold.



Islington Park Street, London, N1
Approximate Gross Internal Floor Area = 109.0 sq m / 1173 sq ft

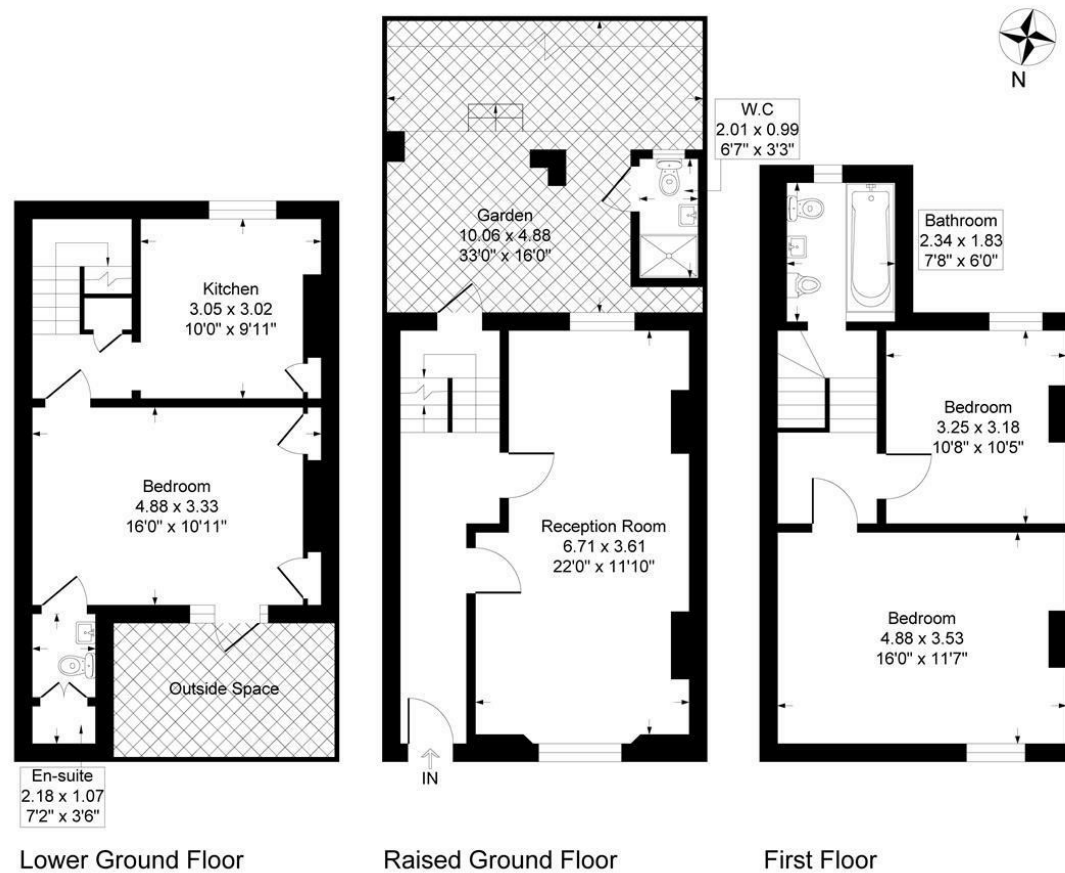


Illustration for identification purposes only, measurements are approximate, not to scale.

Important Notice Debussy Property Service Ltd trading as Braithwait for themselves and for the vendor of this property whose agents they are, give notice that (i) these particulars do not constitute any part of an offer or contract, (ii) all statements contained within these particulars are made without responsibility on the part of Braithwait or the vendor, (iii) whilst none in good faith, none of the statements contained within these particulars are to be relied upon as a statement of representation or fact, (iv) any intending purchaser must satisfy him/herself by inspection or otherwise as to the correctness of each of the statements contained within these particulars, (v) the vendor does not make or give either Braithwait or any person within their employment any authority to make or give any representation or warranty whatsoever in relation to this property. Wide angled lenses may be used in photographs.

Call us on 0207 289 8889 or email sales@braithwait.co.uk

